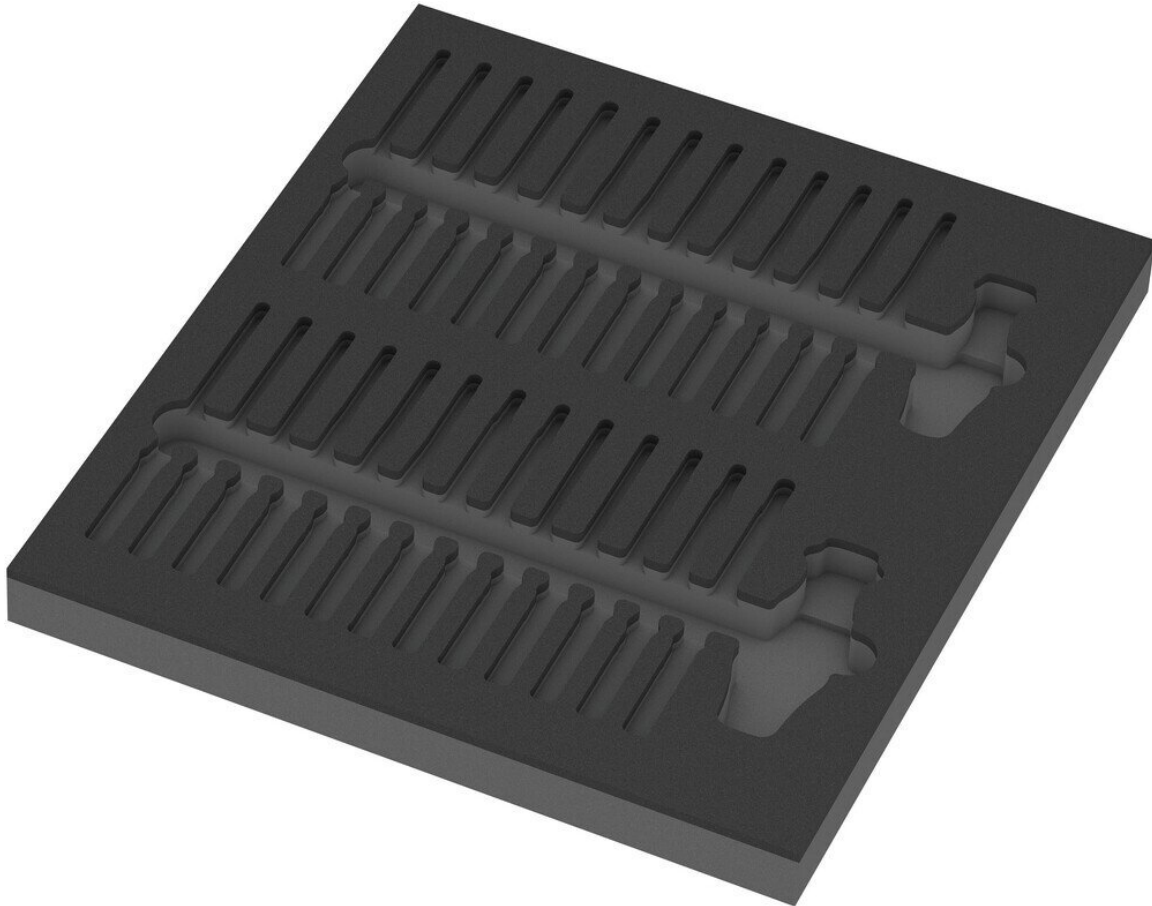


## Kraftform Compact VDE Set 1 foam insert, without tool, 344 x 30 x 392 mm



1 durable foam insert, without tool; 2-colored for quick identification of missing parts; width x height x depth: 344 x 30 x 392 mm; replacement foam insert for Wera item 9751; suitable for the Tool Rebel workshop trolley.

- Durable foam insert, every tool has its fixed place; 2-colored, the absence of tools is quickly noticed
- High-quality, durable foam insert without chemical vapors
- Optimum fit for the best possible removal of tools from the foam insert
- Water and oil-repellent, easy-care and easy to clean
- Protects the tool from dirt and impact

Article no. **WL91050**

Model **9851**

Products for the electronic industry



|                          |  |
|--------------------------|--|
| Manufacturer             | WERA   |
| Manufacturer article no. | 05137351001  |
| GPSR manufacturer data   | WERA Werkzeuge GmbH<br>Korzerter Strasse 21-25<br>DE-42349 Wuppertal-Cronenberg<br>www.wera.de |
| Length                   | 160 mm   |
| Width                    | 360 mm   |
| Height                   | 60 mm  |
| Length with packaging    | 160 mm   |
| Width with packaging     | 360 mm   |
| Height with packaging    | 60 mm  |
| Sales unit               | 1 piece  |
| Content unit             | 1 piece  |
| VDE                      | yes  |
| ESD compliant            | no   |