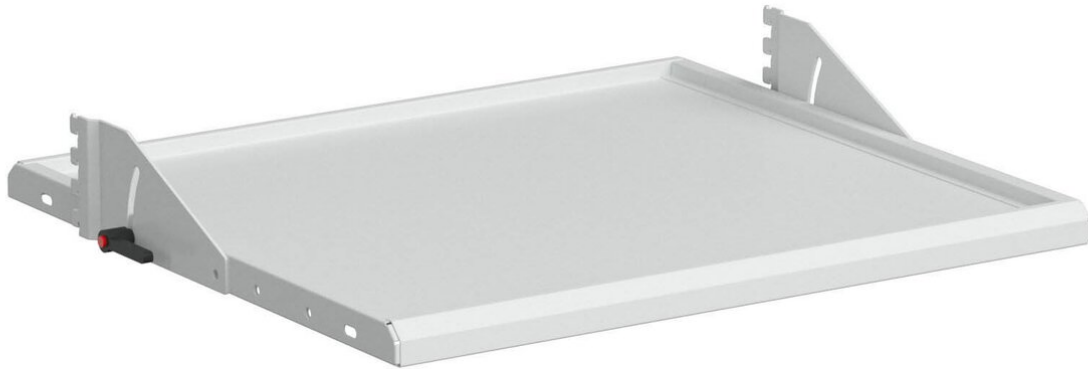


ESD shelf 870 x 650 mm, inclinable, M900



Adjustable shelf with infinitely variable tilt adjustment for M900 multi trolley.

- Dimension: 870 x 650 x 37
- Color: Light grey
- Max. Load capacity: 100 kg
- ESD compliant: Yes
- Suitable for:
- Concept work table
- TP work table
- Treston industrial multi-trolley
- Treston industrial multi-trolley
- Stepless tilt adjustment 0-25°

[https://3d.treston.com/?duid=weidinger_enDesign your individual workstation with the TRESTON 3D configurator]

[<https://www.weidinger.eu/en/b/treston-industrial-furniture>View TRESTON manufacturer website]

item number	WL83303
model	TMTAS9-49
model line	M900

manufacturer	TRESTON
manufacturer item number	TMTAS9-49
length	650 mm
width	870 mm
height	37 mm
length with packaging	660 mm
width with packaging	890 mm
height with packaging	50 mm
order unit	1 piece
content unit	1 piece
Colour	light grey
material	Epoxy powder-coated steel
load capacity	100 kg
inclination adjustable	0 – 25 °
ESD safe	yes