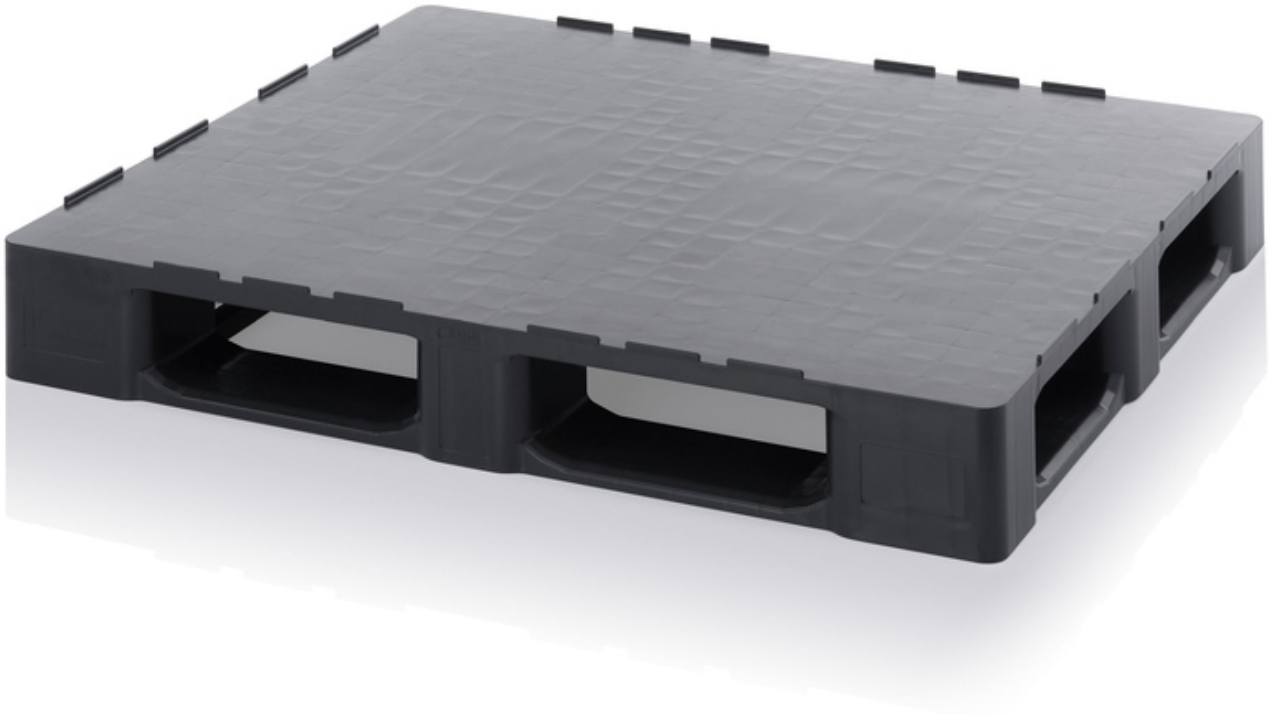


ESD pallets closed with safety edge, black



AUER Packaging's ESD pallet with solid base protects your goods during storage and transportation; its smooth surface also makes it particularly easy to clean. Sensitive electronic goods are protected from charges thanks to the special electrically conductive material.

- Electrically conductive material
- High load-bearing capacity
- Optional steel rod reinforcement
- Suitable for high-bay racking
- Also available without retaining edge

item number	WL63619
model	ESD HD 12105
manufacturer	AUER
manufacturer item number	ESD HD 12105
length	1200 mm
width	1000 mm
height	163 mm

Products for the electronic industry



order unit	1 piece
content unit	1 piece
Colour	black
material	(ESD PP) Hollow chamber material, extruded polypropylene
typical bleeder resistance	$10^3 < 10^{10}$ Ohm
ESD safe	yes