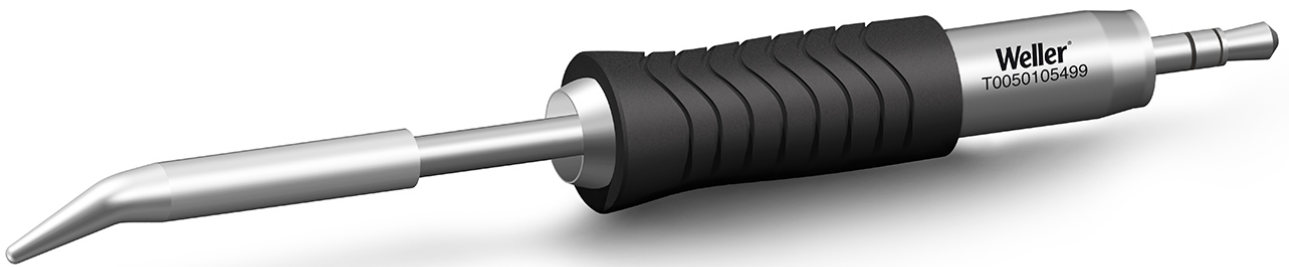


RTU 016 C X MS Ultra Weller soldering tip, conical bent Ø 1.6 mm, MIL-SPEC



High performance active tip RT Ultra MIL-SPEC for heavy duty applications and largest components

- RT Ultra Soldering Tips for WXUP Soldering Irons
- Designed for heavy duty applications and large components
- Made for high performance and heavy duty applications (LED soldering, Solar technology, Electronic components, Multi-layer boards, Large heat sinks, Hyper frequency PCB with a big dissipater)
- MIL-SPEC / IPC Standard
- Thermal Core Technology for optimized heat transfer

item number	WL63552
model	RTU 016 C X MS
manufacturer	WELLER
manufacturer item number	T0050105499
order unit	1 piece
content unit	1 piece
diameter	5.5 mm
power	150 W
type of tip	MS
compatible soldering station	WX Serie
suitable stand	WSR 200
Tip series	RTU-MS
Soldering tip angle	30 °

tip length	39.3 mm
tip width	1.6 mm
soldering tip diameter	1.6 mm
tip shape	conical
tip alignment	bent
suitable soldering iron	WXUP MS (150 W)
suitable handle	wxup