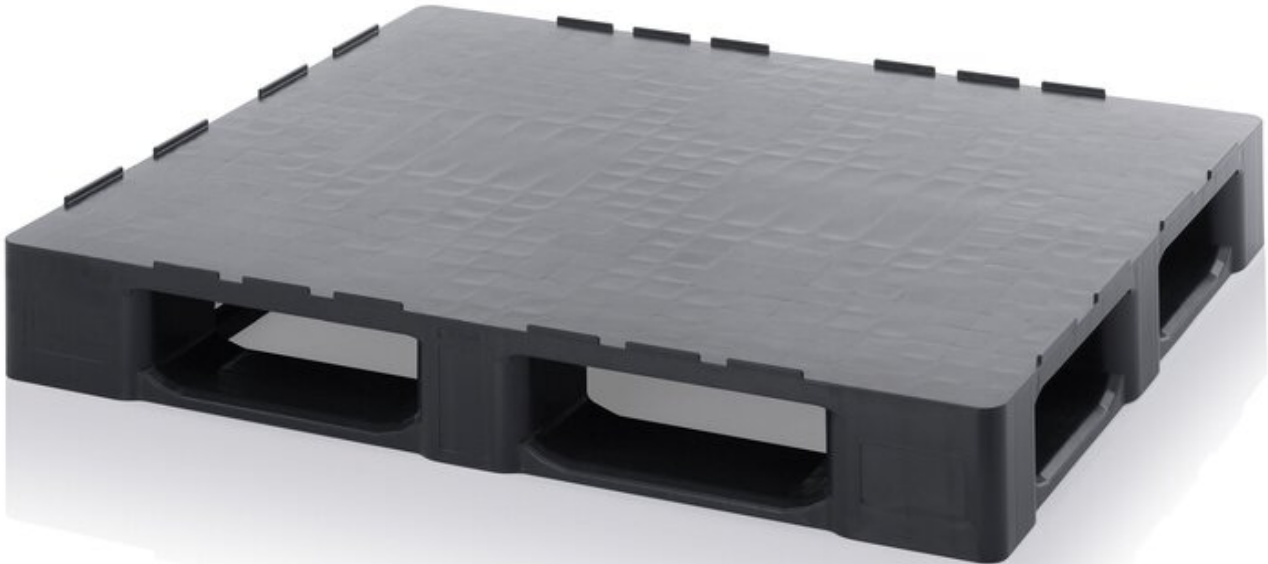


ESD pallets closed with safety edge, black



AUER Packaging's ESD pallet with solid base protects your goods during storage and transportation; its smooth surface also makes it particularly easy to clean. Sensitive electronic goods are protected from charges thanks to the special electrically conductive material.

- Electrically conductive material
- High load-bearing capacity
- Optional steel rod reinforcement
- Suitable for high-bay racking
- Also available without retaining edge

Item no.	WL63339
Model	ESD H 12105
Manufacturer	AUER
Manufacturer article no.	ESD H 12105
GPSR manufacturer data	AUER Packaging GmbH Am Kroit 25/27 DE-83123 Amerang www.auer-packaging.de

Length	1200 mm
Width	1000 mm
Height	163 mm
Sales unit	1 piece
Content unit	1 piece
Colour	black
Material	(ESD PP) Hollow chamber material, extruded polypropylene
Typical leakage resistance	$10^3 < 10^{10}$ Ohm
ESD compliant	yes