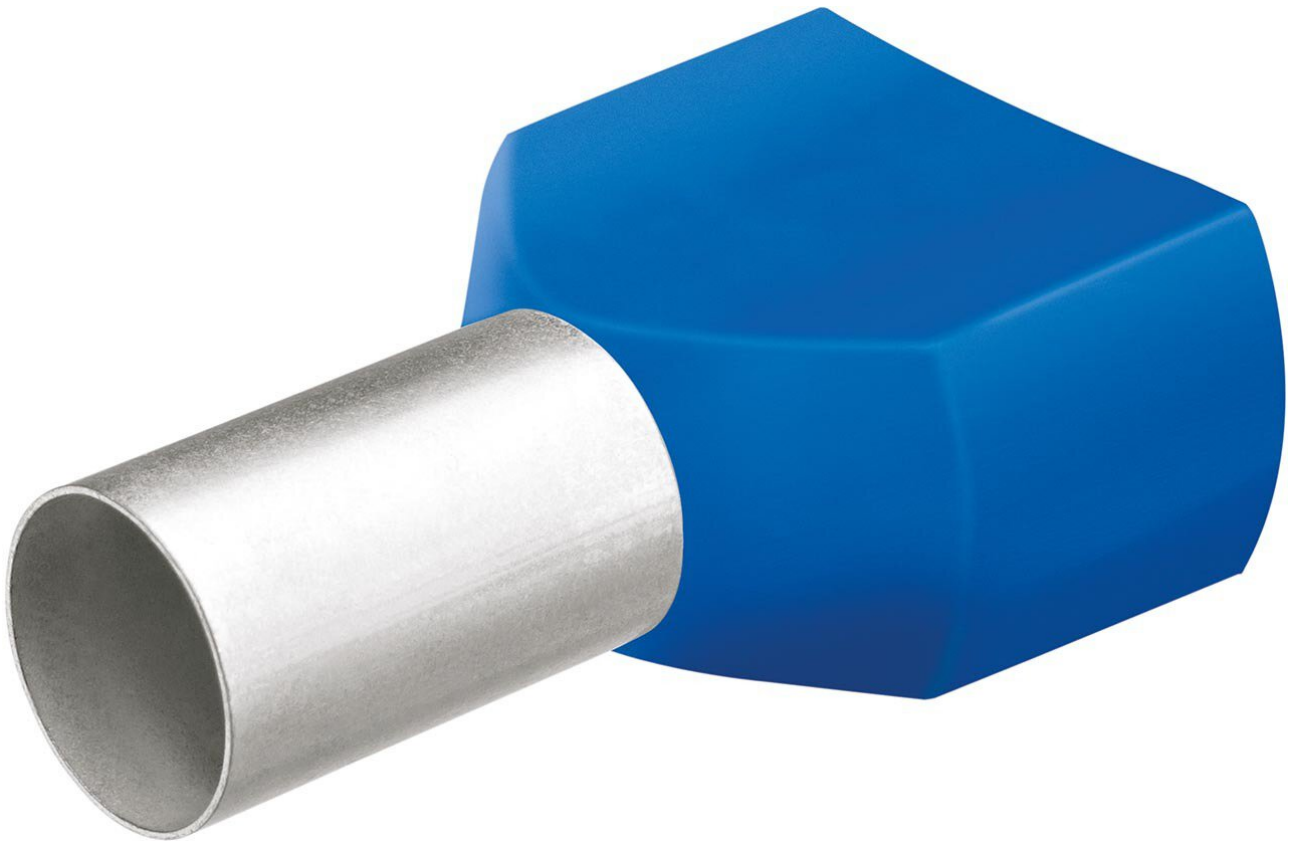


## Twin wire end ferrules with plastic collar, 9 mm, 2x 2.5 mm<sup>2</sup>, blue, 100 pieces



With twin wire end ferrules with plastic collar, crimping range 9 mm, cable 2x2.5 mm<sup>2</sup>, blue, 100 pieces, Knipex offers a high-quality connecting element that has been specially developed for professional applications in control and distribution systems. The high-quality workmanship ensures consistent quality throughout the entire assembly process and significantly reduces the risk of incorrect connections. Whether used in series production or for repairs, these sleeves impress with their durability, process reliability and high contact quality.

Item no.	WL62134
Model	97 99 374
Manufacturer	KNIPEX
Manufacturer article no.	97 99 374
GPSR manufacturer data	KNIPEX-Werk

Oberkamper Strasse 13  
DE-42349 Wuppertal-Cronenberg  
[www.knipex.de](http://www.knipex.de)

Length	120 mm
Width	135 mm
Height	15 mm
Length with packaging	120 mm
Width with packaging	135 mm
Height with packaging	15 mm
Volume with packaging	0.243 dm <sup>3</sup>
Sales unit	1 PU
Content unit	100 piece
Colour	blue
RoHS compliant	no
VDE	no
ESD compliant	no
Cable cross-section	2.5 mm <sup>2</sup>
Crimping area	9 mm