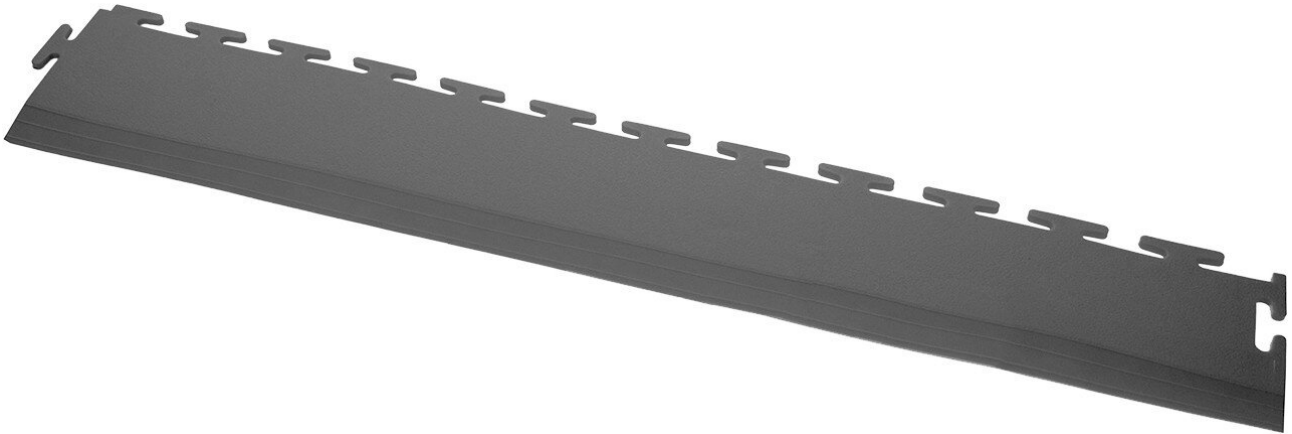


## PVC floor ramp, graphit, 1 piece, 5 mm > 1 mm, 500 x 90 mm



Ecotile's interlocking industrial tiles are suitable as floor tiles for commercial, domestic and light industrial applications to reduce dust and noise. The application should take place on hard surfaces. The floor tiles consist of an injection-moulded composite material that is ecologically sustainable.

- Ramp from 5mm to 1mm
- Clip-On ramp sections
- Dimensions: 500 mm x 90 mm x 5 mm >1 mm

<b>Item no.</b>	<b>WL53352</b>
Manufacturer	ECOTILE
Manufacturer article no.	E55.231/1
GPSR manufacturer data	ecotile Flooring Sedgwick Road Unit 15 GB-LU4 9DT Luton www.ecotileflooring.com
Length	500 mm
Width	90 mm
Height	5 mm
Sales unit	1 piece
Content unit	1 piece
Manufacturer colour information	graphite
Colour	graphite

Products for the electronic industry



Incl. battery	no
Connection system	T-Lock
Surface texture	flat
Strength	5 mm
Type of surface	floor ramp
ESD compliant	no

## Other versions

Item no.	Strength
<b>WL53352</b>	<b>5 mm</b>
WL41894	7 mm
WL53354	10 mm