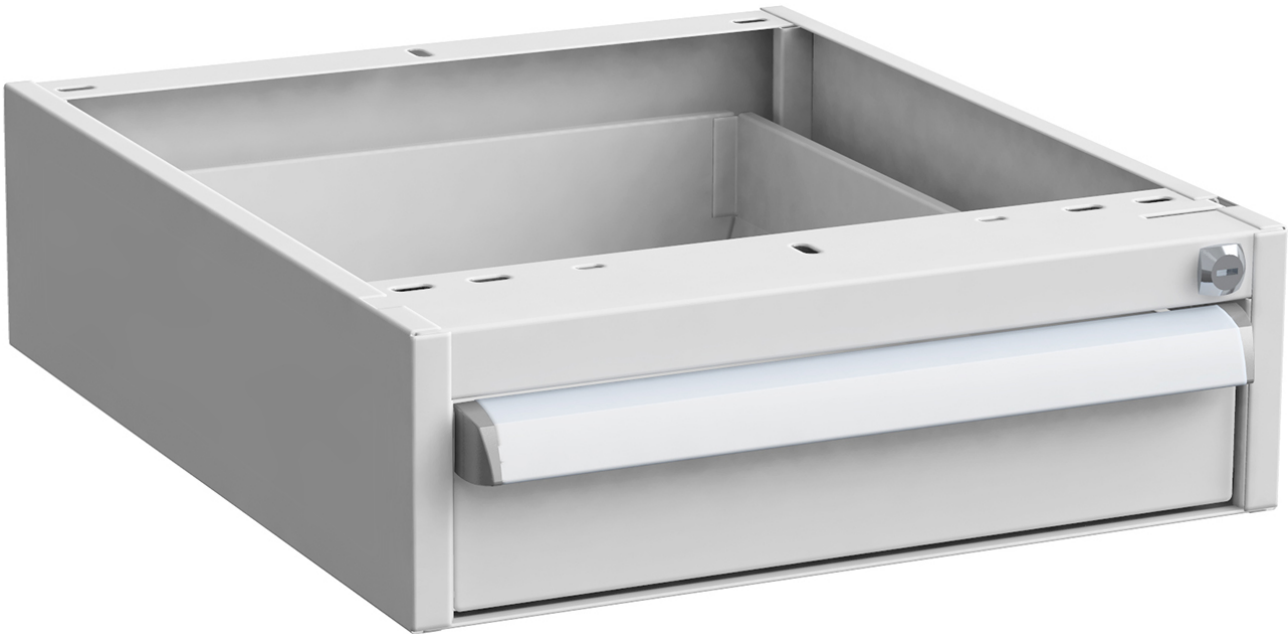


ESD drawer unit 45/14, 1 drawer 100 mm, 100 % pull-out



High-quality steel drawer units with central locking for storing tools and small parts. Max. Load capacity 60 kg/drawer. Internal drawer dimensions: 380 x 500 x 90 mm

[https://3d.treston.com/?duid=weidinger_en Design your individual workstation with the TRESTON 3D configurator]

[<https://www.weidinger.eu/en/b/treston-industrial-furniture> View TRESTON manufacturer website]

item number	WL51609
manufacturer	TRESTON
manufacturer item number	60349001
width	450 mm
height	140 mm
depth	520 mm
length with packaging	540 mm
width with packaging	490 mm
height with packaging	160 mm
order unit	1 piece
content unit	1 piece

ESD safe

yes

