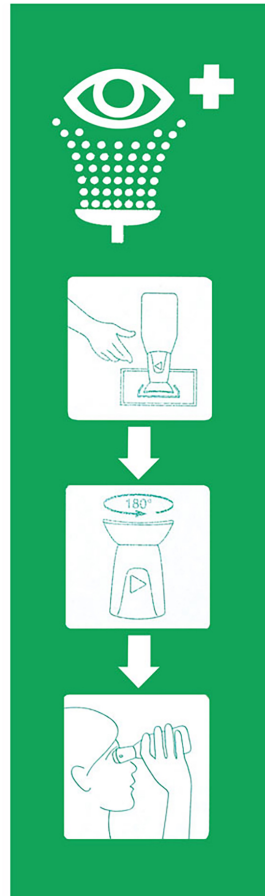


Eyewash station "single" with 1 bottle, 500ml, wall mounted



Every second counts when the eye is injured or soiled. To ensure that you always have the first-aid eye rinsing device at hand during operation, we recommend a fixed station on the wall.

simple and permanently installed saves valuable time in an emergency, no searching immediately ready for use Individual bottles available for refilling

Eye wash station Single

complete set for wall mounting

incl. 1 eye wash bottle (500 ml, 9% sodium chloride, especially against foreign bodies in the eye) Plastic holder separate instruction board Screws for fastening

You can find out which eye wash to use for which eye injury in our eye emergency plan.

Click here for the eye emergency plan!

- complete set for wall mounting
- Plastic mounting
- Eye wash bottle (500 ml, sodium chloride solution, 0.9%)
- separate panel

- incl. screws for mounting
- simple and permanently installed
- Single bottles available for refilling
- saves valuable time in an emergency, no searching

item number	WL50185
model	50011
manufacturer	FRANZ MENSCH
manufacturer item number	50011
order unit	1 piece
content unit	1 piece