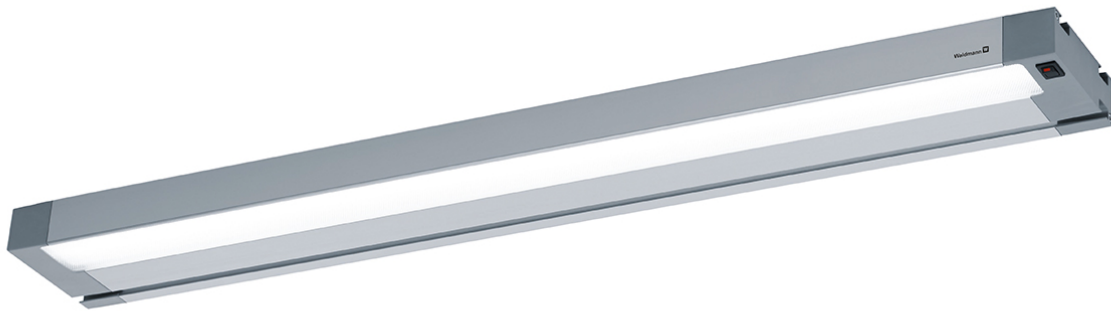


LED system light WLA, 35 W, 240 V



The WLA system luminaire from Waldmann shows what flexibility looks like. Four different length versions provide individual lighting requirements for all table widths in a wide variety of industrial applications. In order to keep the installation effort as low as possible, even at interlinked workstations, the concept provides for the through-wiring of several luminaires.

- LED Technology
- Colour temperature neutral white 5 000 K
- Colour rendering Ra > 80
- Glare suppression via structure diaphragm
- Housing made of colourless anodised aluminium and grey plastic
- Aperture from PC
- Mounting by means of T-slots (8 mm) or lamp holders (accessories)
- Switch for on / off
- Protection class IP20, protection class I
- Supplied with built-in Wieland GST18i3 plug / socket (lights with through-wiring)
- Accessories: cables, lamp holder sets

| | |
|--------------------------|--------------------|
| item number | WL48316 |
| model | WLA 3000/850/T |
| manufacturer | WALDMANN |
| manufacturer item number | 113472000-00738750 |
| order unit | 1 piece |
| content unit | 1 piece |

Products for the electronic industry



| | |
|------------------------|--|
| material | aluminium, plastic |
| Lamp or magnifier type | system light |
| luminous flux | 3000 lm |
| connections | 240 VAC |
| dimnable | no |
| colour temperature | 5000 °K |
| power | 35 W |
| equipping | LED, neutral white |
| housing colour | colourless anodised aluminium and grey plastic |
| protection class | 1 |
| protection class | 20 IP |
| ESD safe | no |

