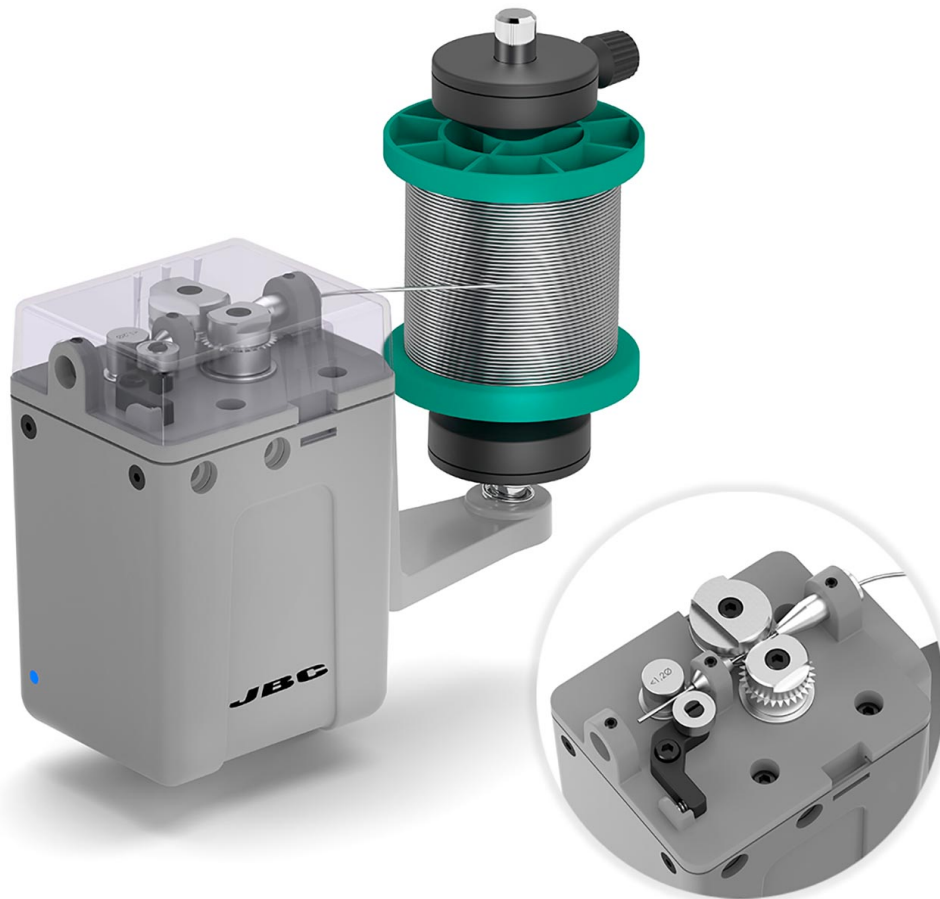


## Automatic solder wire feeder SFR-B



- for the automatic solder wire transport and is controlled by a PC/PIC
- To establish communication between the SFR solder feeder and a robot (PC or PLC), download the communication protocol for SFR from [www.jbctools.com/jbcsoftware.html](http://www.jbctools.com/jbcsoftware.html).
- Control parameters such as wire length and dispensing speed are adjustable.
- It has a wire detector sensor, and in case of a transport error the system informs with "clogged" or "used up".
- The automatic solder wire feeder is compatible with various GSFR solder wire guide kits, which are available for different wire diameters and with or without solder wire perforation.
- Guide Kits GSFR are not included.

item number	WL47133
model	SFR-B
manufacturer	JBC

manufacturer item number	SFR-B
order unit	1 piece
content unit	1 piece

