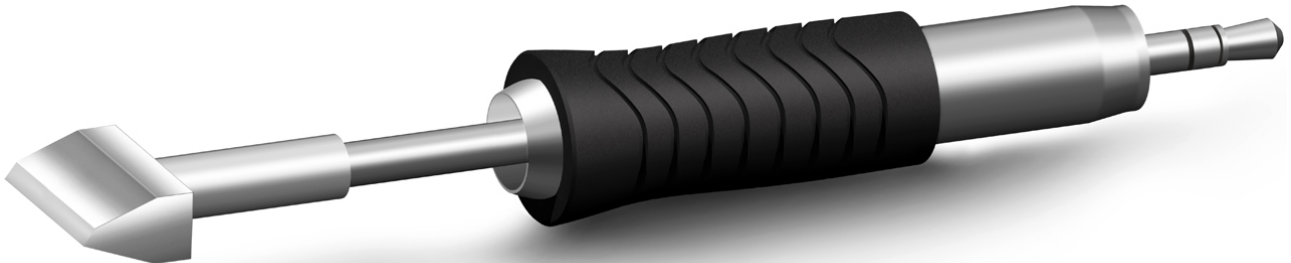


Weller soldering tip RTU series, blade-shaped, width 16 mm



- RT Ultra soldering tips for WXUP soldering irons
- For robust applications and large components (LED soldering, solar technology, electronic components, multi-layer boards, large heat sinks, high-frequency PCBs with large heat sink)
- Powerful active soldering tips for rugged applications and large components
- MIL-SPEC / IPC Standard
- Thermal Core technology for optimized heat transfer

item number	WL46770
model	RTU 160 K MS
manufacturer	WELLER
manufacturer item number	T0050106799
order unit	1 piece
content unit	1 piece
diameter	5.5 mm
product series	RTU series
power	150 W
type of tip	MS
compatible soldering station	WX Serie
suitable stand	WSR 200
Tip series	RTU-MS
tip length	27 mm
tip width	16 mm
tip thickness	1.5 mm
soldering tip diameter	16 mm

tip shape	blade-shaped
tip alignment	straight
suitable soldering iron	WXUP MS (150 W)
suitable handle	WXUP