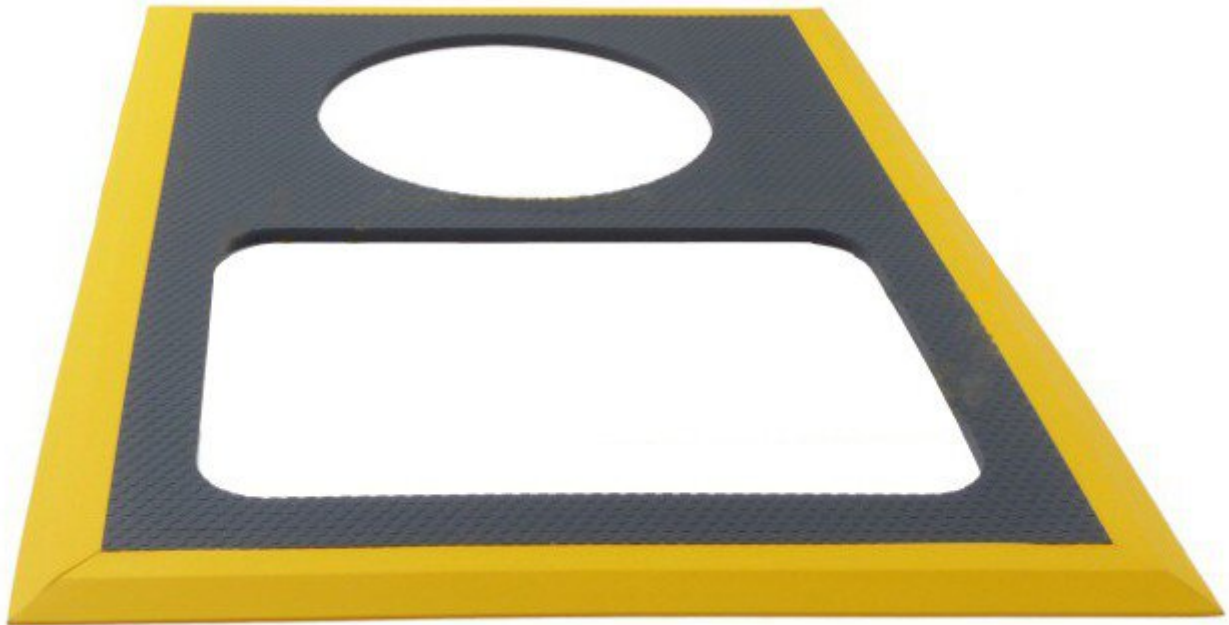


ESD floor mat with leading edge



ESD protection mats or static regulation grounding mats are used to ground you when working with ESD-sensitive (electrostatic discharge) electronic components such as printed circuit boards (PCBs) and backplanes and motherboards.

- Floor mat with yellow leading edge
- for stand 1801.G.P.TERM
- Delivery without shoe electrode

item number	WL42952
model	7100.PGT120.SM.TERM
manufacturer	WARMBIER
manufacturer item number	7100.PGT120.SM.TERM
scope of supply	1 floor mat without shoe electrode
order unit	1 piece
content unit	1 piece
ESD safe	yes