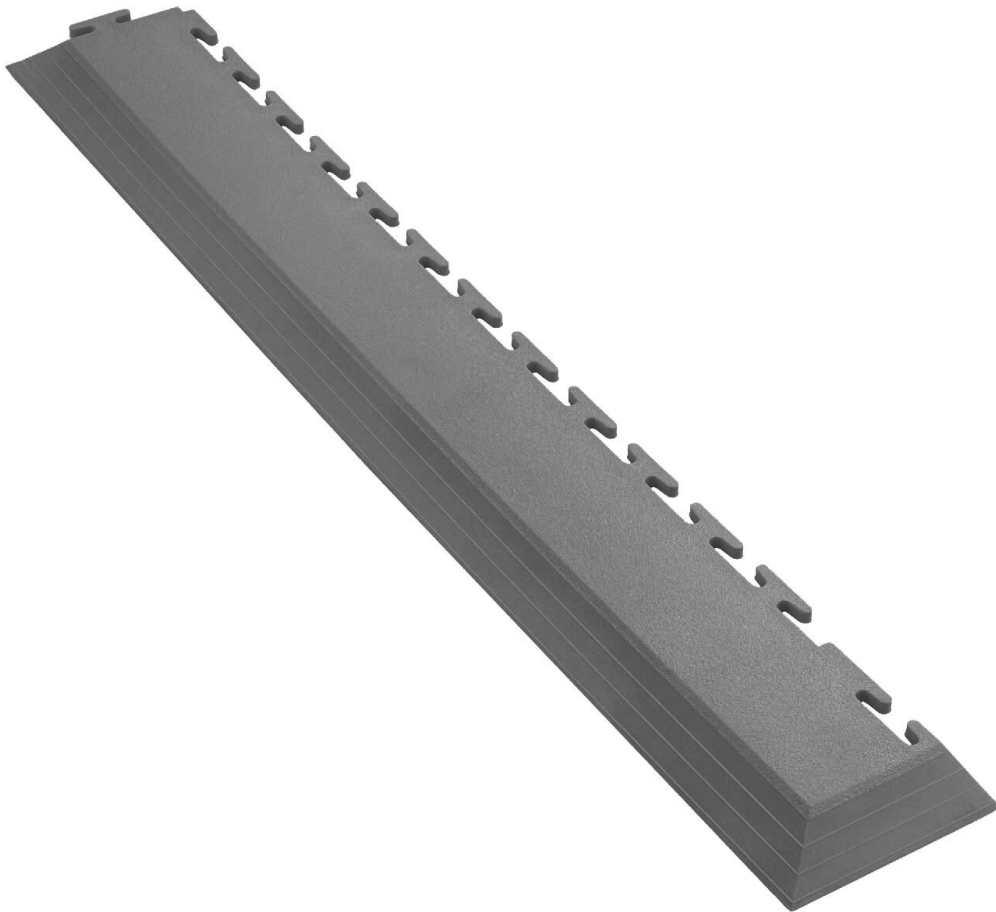


PVC corner ramp, T-Lock, gray, 590 x 90 x 10 mm, 1 piece



Ecotile's interlocking industrial tiles are suitable as floor tiles for commercial, domestic and light industrial applications to reduce dust and noise. They should be installed on hard surfaces. The floor tiles are made from an injection-molded composite material that is environmentally sustainable.

- Ramp from 10mm to 1mm
- Clip-On ramp sections
- Dimensions: 590 mm x 90 mm

Item no.	WL41927
Model	ecotile Flooring
Manufacturer	ECOTILE

Products for the electronic industry



Manufacturer article no.	E59.220/1
GPSR manufacturer data	ecotile Flooring Sedgwick Road Unit 15 GB-LU4 9DT Luton www.ecotileflooring.com
Length	590 mm
Width	90 mm
Height	10 mm
Sales unit	1 piece
Content unit	1 piece
Manufacturer colour information	gray (RAL 7015)
Colour	grey
Material	pvc
Incl. battery	no
Connection system	T-Lock
Surface texture	flat
Strength	10 mm
Type of surface	corner ramp
Properties of the covering	smooth
ESD compliant	no

Other versions

Item no.	Strength
WL41885	7 mm
WL41927	10 mm