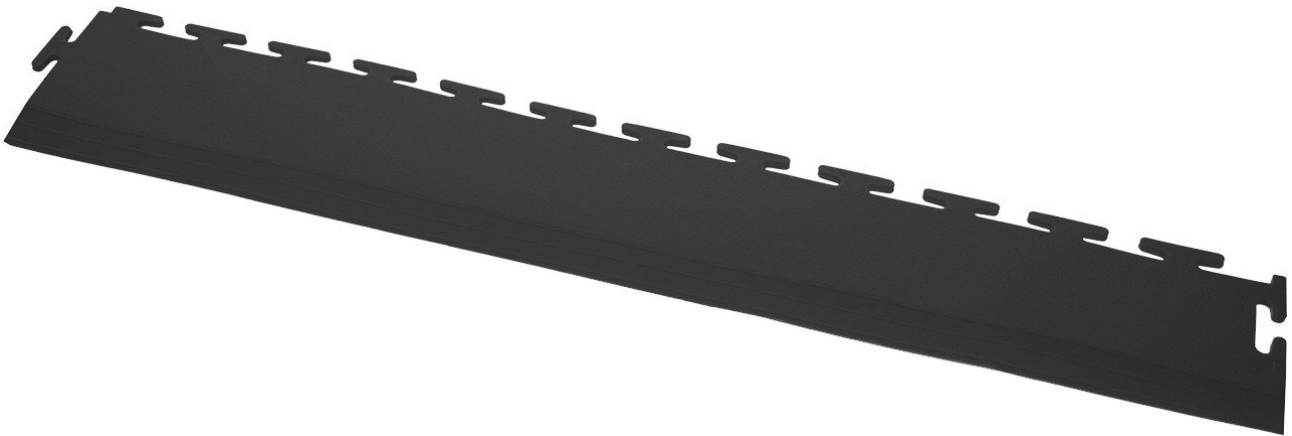


## PVC floor ramp, T-Lock, black, 500 x 90 x 7 mm, 1 piece



Ecotile's interlocking industrial tiles are suitable as floor tiles for commercial, domestic and light industrial applications to reduce dust and noise. They should be installed on hard surfaces. The floor tiles are made from an injection-molded composite material that is environmentally sustainable.

- Ramp from 7mm to 1mm
- Clip-On ramp sections
- Dimensions: 500 mm x 90 mm x 7 mm >1 mm

<b>Item no.</b>	<b>WL41891</b>
Model	ecotile Flooring
Manufacturer	ECOTILE
Manufacturer article no.	E57.101/1
GPSR manufacturer data	ecotile Flooring Sedgwick Road Unit 15 GB-LU4 9DT Luton www.ecotileflooring.com
Length	500 mm
Width	90 mm
Height	7 mm
Sales unit	1 piece
Content unit	1 piece
Manufacturer colour information	black (RAL 9017)

Products for the electronic industry



Colour	black
Material	pvc
Incl. battery	no
Connection system	T-Lock
Surface texture	flat
Strength	7 mm
Type of surface	floor ramp
Properties of the covering	smooth
ESD compliant	no

## Other versions

Item no.	Strength
<b>WL41891</b>	<b>7 mm</b>
WL82955	10 mm