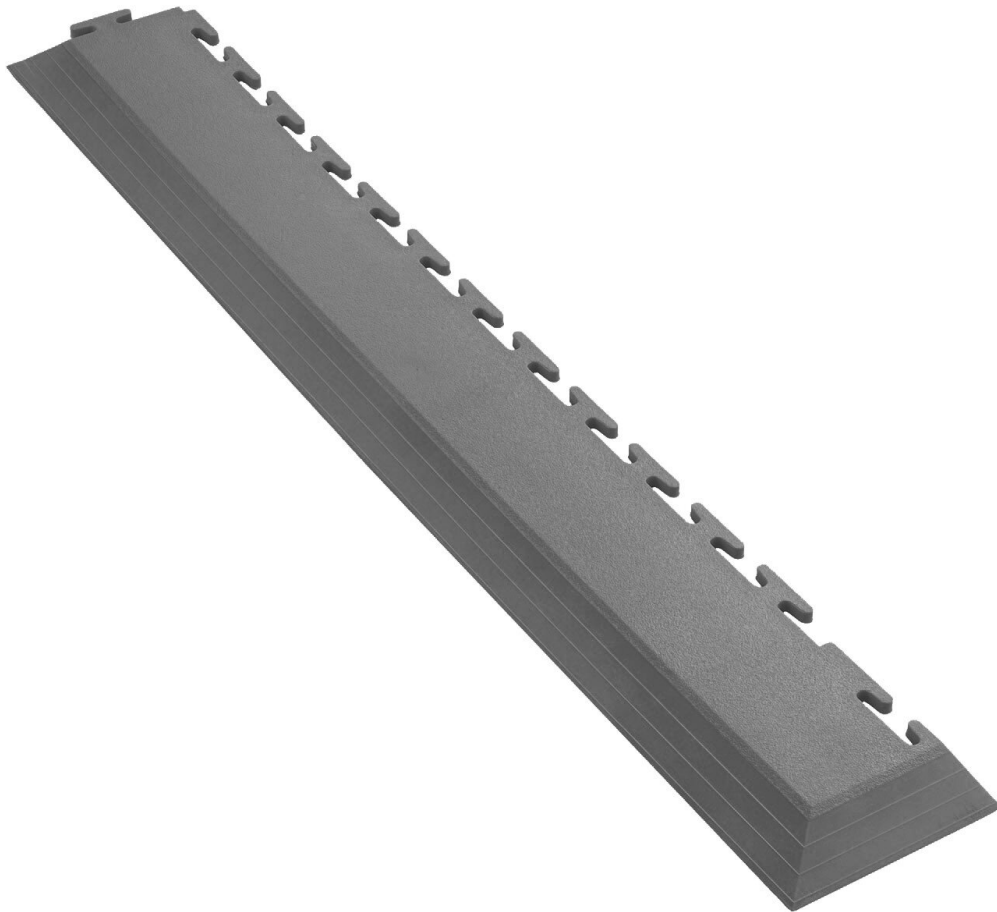


PVC corner ramp, T-Lock, gray, 590 x 90 x 7 mm, 1 piece



Ecotile's interlocking industrial tiles are suitable as floor tiles for commercial, domestic and light industrial applications to reduce dust and noise. The application should take place on hard surfaces. The floor tiles consist of an injection-moulded composite material that is ecologically sustainable.

Important: Please note the installation instructions for ecotile floor tiles. These instructions are available under "Documents" > "Download technical data sheet".

- Ramp from 7mm to 1mm
- Clip-On ramp sections
- Dimensions: 590 mm x 90 mm x 7 mm >1 mm

Article no.

WL41885

Model

ecotile Flooring

Products for the electronic industry



Manufacturer	ECOTILE
Manufacturer article no.	E57.220/1
GPSR manufacturer data	ecotile Flooring Sedgwick Road Unit 15 GB-LU4 9DT Luton www.ecotileflooring.com
Length	590 mm
Width	90 mm
Height	7 mm
Sales unit	1 piece
Content unit	1 piece
Manufacturer colour information	gray (RAL 7015)
Colour	grey
Material	pvc
Connection system	T-Lock
Surface texture	flat
Strength	7 mm
Type of surface	corner ramp
Properties of the covering	smooth
ESD compliant	no

Other versions

Article no.	Strength
WL41885	7 mm
WL41927	10 mm