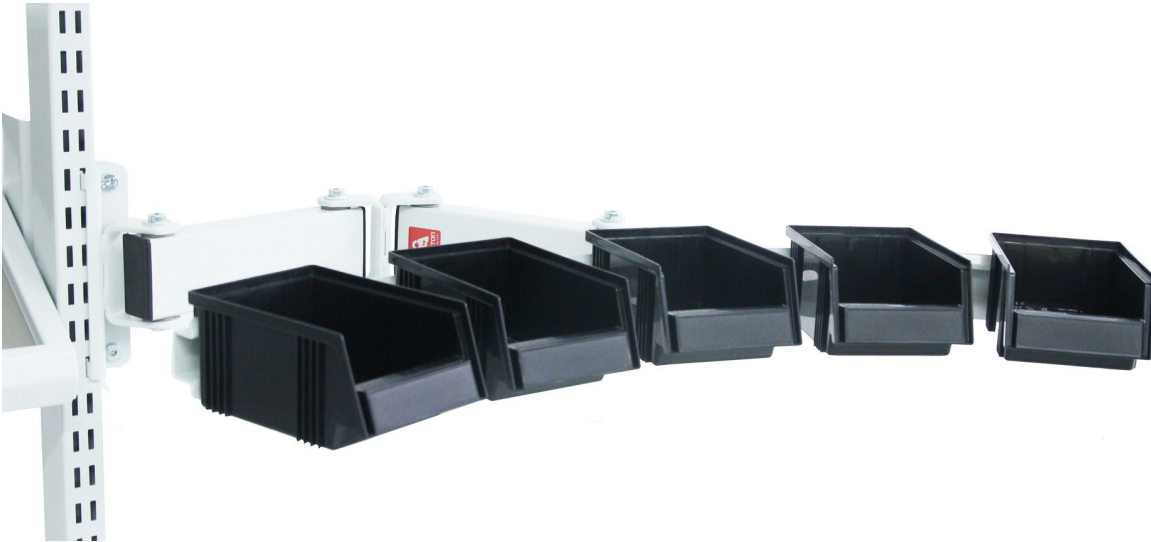


## Curved suspension strip with swivel arm, 770x54 mm, ESD



Curved hanging rail with arm. Can be extended with an additional curved hanging rail.

- WxD 770x54 mm
  - suitable for: Concept workbench, LMT workbench, TowerLine workbench, TP workbench, TP grid tube frame, Workshop workbench, TED electric workbench
- [[https://3d.treston.com/?duid=weidinger\\_en](https://3d.treston.com/?duid=weidinger_en)Design your individual workstation with the TRESTON 3D configurator]

<b>Item no.</b>	<b>WL41294</b>
Model	92949002P
Model line	Concept
Manufacturer	TRESTON
Manufacturer article no.	92949002P
GPSR manufacturer data	Treston Deutschland GmbH Frankfurter Str. 101 DE-65479 Raunheim <a href="http://www.treston.de">www.treston.de</a>
Width	770 mm
Height	54 mm
Depth	54 mm
Sales unit	1 piece
Content unit	1 piece

Colour	light grey
Load capacity	15 kg
ESD compliant	yes

