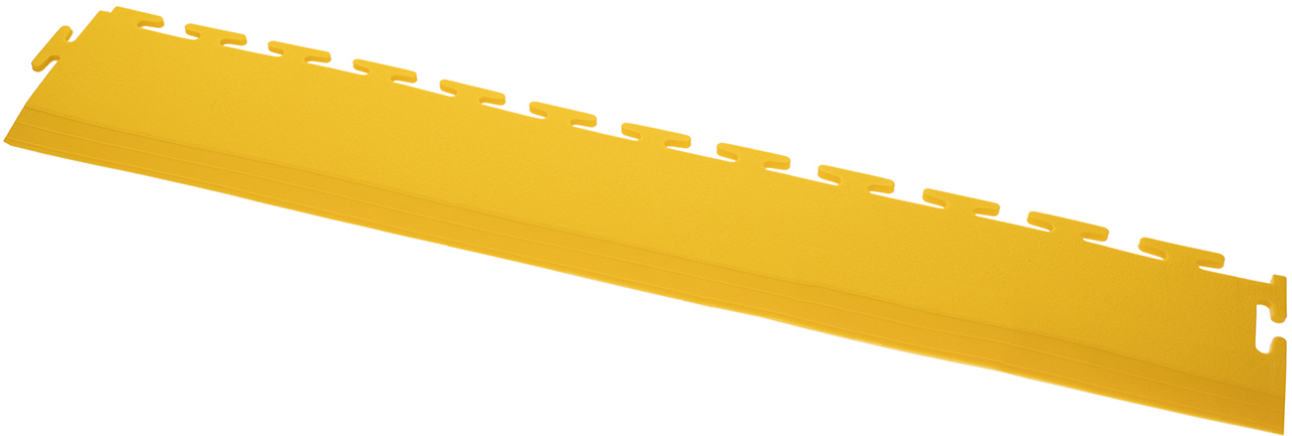


PVC Floor ramp, from 7 mm to 1 mm, yellow, 500 x 90 mm



Important: Please note the installation instructions for ecotile floor tiles. These instructions are available under "Documents" > "Download technical data sheet".

- Ramp from 7mm to 1mm
- length 500mm
- for safe closing of exposed tiles in doors or around free standing areas
- PLEASE NOTE: New design, floor ramps do NOT fit 7 mm ramps with purchase date before 30.06.2020

item number	WL40028
model	ecotile Flooring
manufacturer	ECOTILE
manufacturer item number	E57.601/1
length	500 mm
width	90 mm
order unit	1 piece
content unit	1 piece
colour manufacturer	yellow
Colour	yellow
surface texture	hard
type of lining	floor ramp
ESD safe	yes