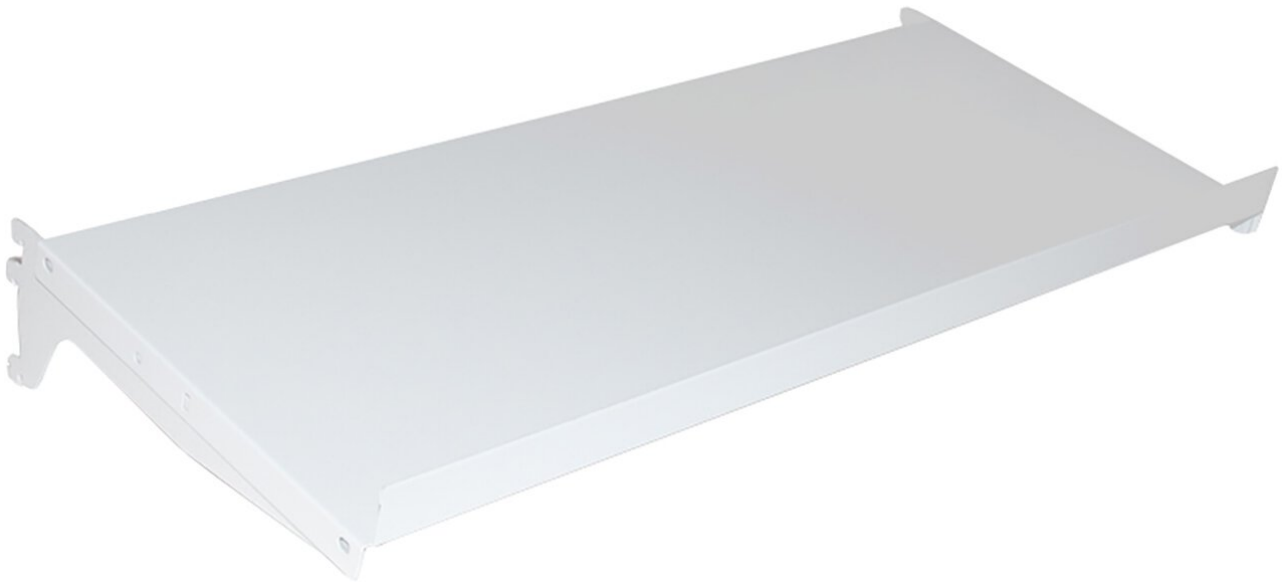


Steel shelf ESD M900, WxD 890x400 mm, 0 or 20° inclined



Due to the mounting options, the steel floor can be mounted at an angle of 20° or horizontally. The steel floor has an integrated protective edge and can be mounted so that the edge points either forward or backward.

- Steel shelf, load capacity 50 kg
- Suitable for Concept workbench, TP workbench, Workshop workbench, Multi trolley [https://3d.treston.com/?duid=weidinger_en|Design your individual workstation with the TRESTON 3D configurator]

Item no.	WL39259
Model	852769-49
Manufacturer	TRESTON
Manufacturer article no.	852769-49
GPSR manufacturer data	Treston Deutschland GmbH Frankfurter Str. 101 DE-65479 Raunheim www.treston.de
Width	890 mm
Height	60 mm
Depth	400 mm
Sales unit	1 piece

Content unit	1 piece
Manufacturer colour information	Light grey RAL7035
ESD compliant	yes

