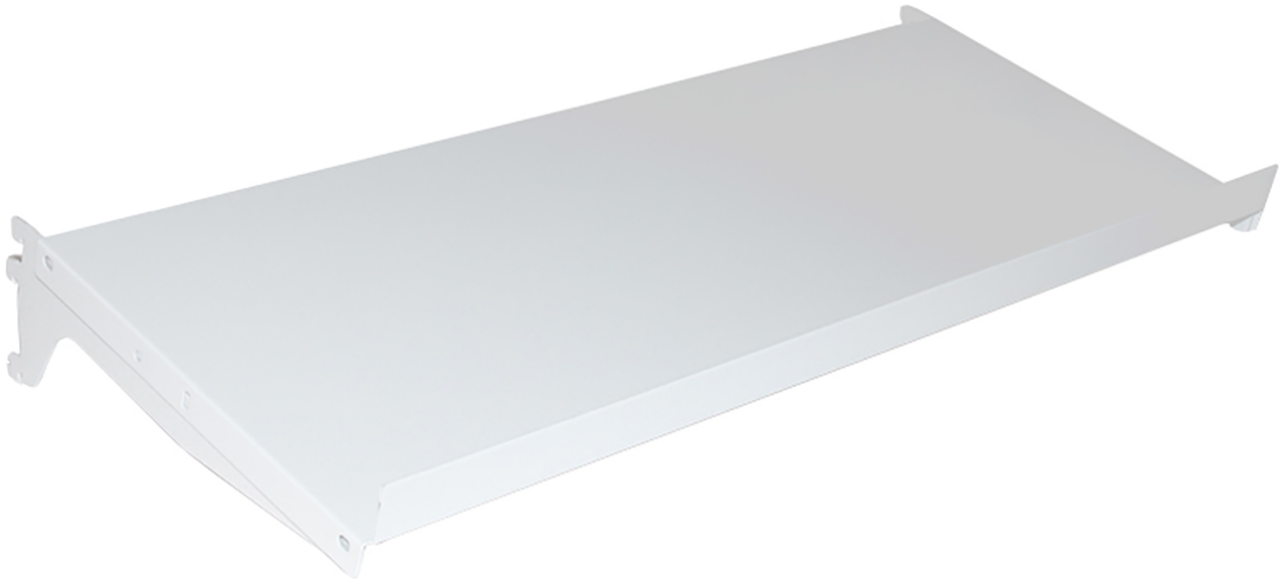


Steel shelf ESD M750, WxD 740x400 mm, 0 or 20° inclined, one side



Due to the dual-use shelf brackets, the shelf can either be tilted by 20° or used in a horizontal position. The shelf has an integrated edge that can be used either at the front or the back of the shelf, depending on how the shelf is used.

- Steel shelf, load capacity 50 kg
- Suitable for module M750
- Concept Work Bench, TP Work Bench, Workshop Workbench, Basic Trolley, Multi Trolley, Treston Tower Storage and Work Station

[https://3d.treston.com/?duid=weidinger_en | Design your individual workstation with the TRESTON 3D configurator]

[<https://www.weidinger.eu/en/b/treston-industrial-furniture> | View TRESTON manufacturer website]

item number	WL39257
model	852770-49
manufacturer	TRESTON
manufacturer item number	852770-49
width	740 mm
height	60 mm
depth	400 mm

order unit	1 piece
content unit	1 piece
colour manufacturer	Light grey RAL7035
ESD safe	yes