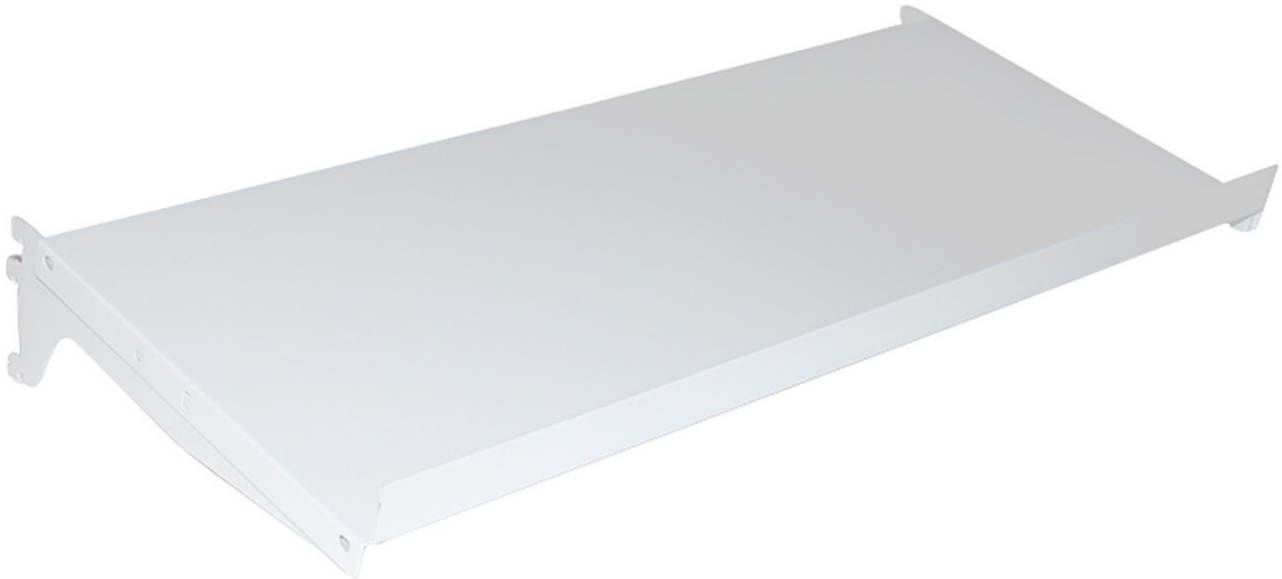


Steel shelf ESD with support M750, WxD 740x300 mm, 0 or 20°.



Due to the mounting options, the steel floor can be mounted at an angle of 20° or horizontally. The steel floor has an integrated protective edge and can be mounted so that the edge points either forward or backward.

- Steel shelf, load capacity 50 kg

[https://3d.treston.com/?duid=weidinger_enDesign your individual workstation with the TRESTON 3D configurator]

[<https://www.weidinger.eu/en/b/treston-industrial-furniture>View TRESTON manufacturer website]

Article no.	WL39256
Model	836028-49
Manufacturer	TRESTON
Manufacturer article no.	836028-49
GPSR manufacturer data	Treston Deutschland GmbH Frankfurter Str. 101 DE-65479 Raunheim www.treston.de
Width	740 mm
Height	60 mm

Depth	300 mm
Sales unit	1 piece
Content unit	1 piece
Manufacturer colour information	Light grey RAL7035
ESD compliant	yes