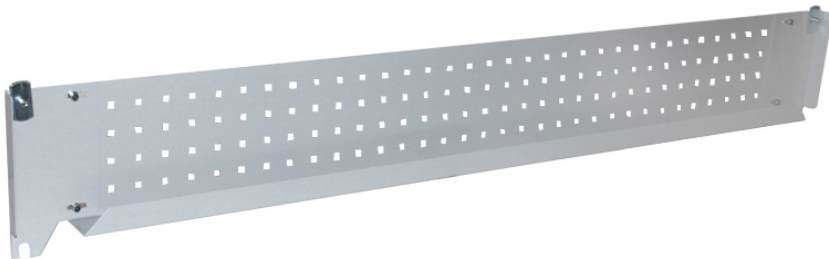


ESD cable tray for TPH work tables, perforated, 1115 x 45 mm



Description

Perforated cable tray for your cable management. Suitable for TPH work tables in ESD design. The cable tray is mounted between C-profiles below the TPH worktop.

- suitable for TPH712
- ESD safe

Product details

model line	TPH
item number	WL35716
manufacturer	TRESTON
manufacturer item number	TPHCT120
colour manufacturer	light gray
model	TPHCT120
dimensions (LxWxH)	45 mm x 1115 mm x 205 mm
depth	45 mm
order unit	piece
material frame	Epoxy powder coated steel