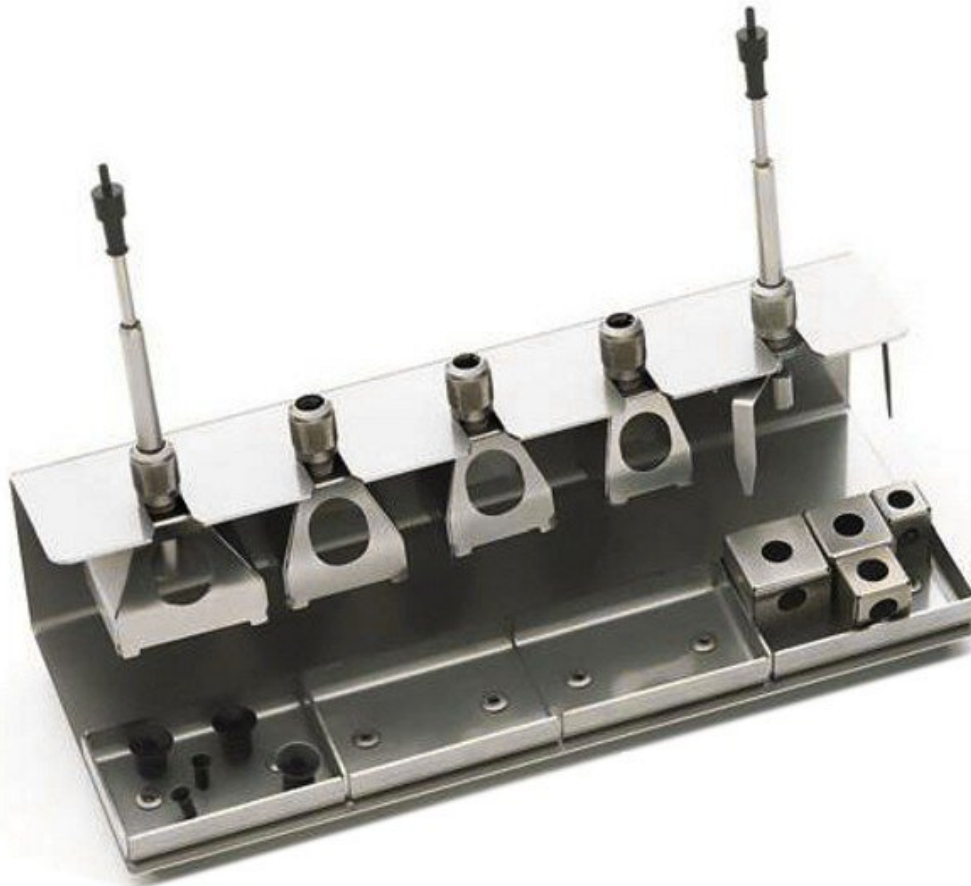


WRK set, 10 x 10 mm, reflow housing set



The WRK set from Weller offers a 10 x 10 mm reflow housing that has been specially developed for precise soldering work. This set is characterized by its high quality and reliability, which are required for demanding soldering processes. The compact design of the reflow housing enables efficient heat transfer and ensures uniform solder joints. The WRK set is compatible with a wide range of soldering stations and is ideal for use in various industrial applications.

- 10 x 10 mm, 12.5 x 12.5 mm, 15.5 x 15.5 mm, 18 x 18 mm
- incl. suction insert Ø 4.5 mm T0058713799

Item no.	WL27237
Model	T0058761732
Model line	WRK
Manufacturer	WELLER

Products for the electronic industry



Manufacturer article no.	T0058761732N
GPSR manufacturer data	WELLER Tools GmbH Carl-Benz-Strasse 2 DE-74354 Besigheim www.weller.eu
Scope of delivery	1x WRK nozzle holder 1x reflow housing (1 x 33 x 33/27 x 27/24 x 24/20 x 20/15.5 x 15.5/12.5 x 12.5/10 x 10 mm each) 1 set of suction inserts Ø 4.5 mm 1 set of suction inserts Ø 10 mm 1x tripod pick-up
Sales unit	1 set
Content unit	1 set
Station (type)	hot air station
ESD compliant	no