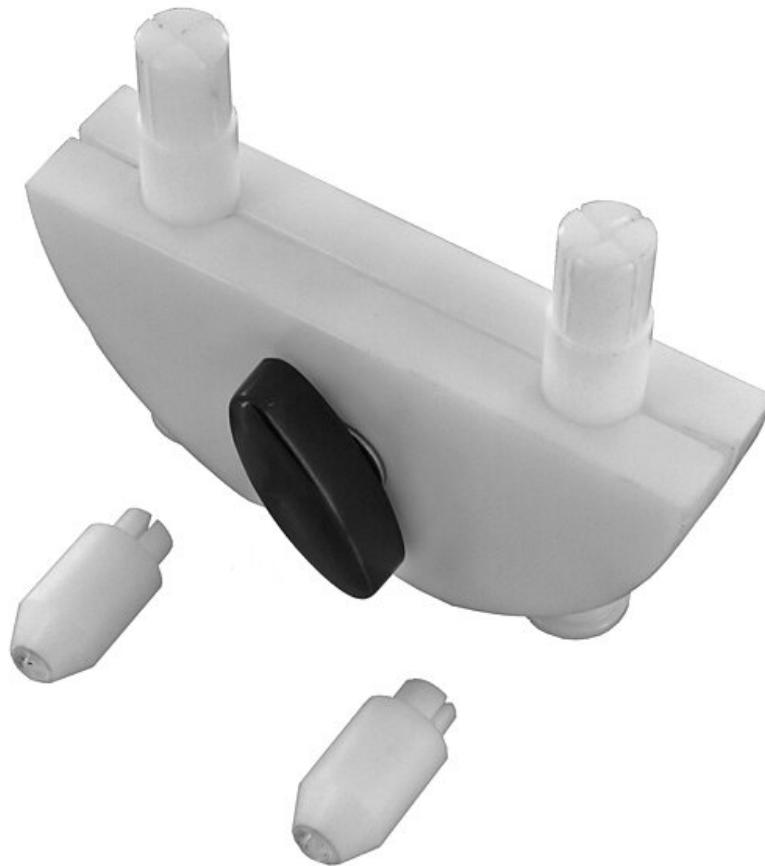


Tilt device for tripod C LED



The tilt device is a retrofittable accessory for tripod C and tripod C LED. It tilts the C LED stand forward by 15° to 25°, thus reducing the viewing angle of the Stemi DV4 stereomicroscope to 45° to 35°.

| | |
|--------------------------|--|
| Item no. | WL25776 |
| Model | 435422-9030-000 |
| Manufacturer | ZEISS |
| Manufacturer article no. | 435422-9030-000 |
| GPSR manufacturer data | Carl Zeiss Micromaging GmbH Königsallee 7-9 DE-37081 Göttingen www.zeiss.de |
| Sales unit | 1 piece |

Products for the electronic industry



| | |
|---------------|---------|
| Content unit | 1 piece |
| ESD compliant | no |

